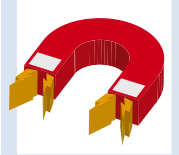
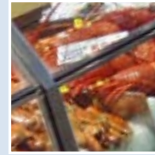


# METAL DETECTABLE FOOD GRADE HANDLING EQUIPMENT



HCHD - 01

HCHD - 07

HCHD - 27



HCHD - 02



HCHD - 04  
HCHD - 05  
HCHD - 06



HCHD - 24  
HCHD - 25  
HCHD - 26



HCHD - 09  
HCHD - 10  
HCHD - 16

**NAYLA**  
PTY LIMITED

TEL: +61 (0)2 9678 9200

FAX: +61 (0)2 9678 9755

Email: [nayla@nayla.com](mailto:nayla@nayla.com)

Web: [www.nayla.com](http://www.nayla.com)

Articles supplied by Harold Moore (HM) are approved for use in the food industry and food contact. Complies with FDA/EU 90/128. Testing is recommended for critical areas.

Colour coded for use with  
the **HACCP** concept.

Insert colour letter at end of  
article number unless stated  
otherwise.



#### ALL PURPOSE STORAGE SYSTEMS TEMP 120°C

- FBK80000 - HOOK 60 mm
- FBK15150 - TOOL HOLDER Ø 22 - 32 mm
- FBK15151 - TOOL HOLDER Ø 28 - 38 mm
- FBK15156 - WALL BRACKET 300 mm Rail only inc screws end cap
- FBK15154 - WALL BRACKET 500 mm Rail only inc screws end cap
- FBK15153 - WALL BRACKET 900 mm Rail only inc screws end cap



#### HAND SHOVELS PP TEMP RANGE -30°C + 80°C

##### BLACK KNOB / COLOURED BLADE

- HCHD - 01 HAND SHOVEL SMALL BLADE 242(W) X 264(D) X 478(L) mm
- HCHD - 07 HAND SHOVEL STANDARD BLADE 247(W) x 315(D) x 527(L) mm
- HCHD - 27 HAND SHOVEL DEEP PAN SMALL BLADE 257(W) x 350(D) x 587(L) mm



#### TWO PIECE SHOVELS PP TEMP RANGE -30°C + 80°C

##### BLACK HANDLE / COLOURED BLADE

- HCHD - 02 SHOVEL SMALL BLADE 242(W) x 264(D) x 930(L) mm
- HCHD - 04 SHOVEL STANDARD BLADE 247(W) x 315(D) x 978(L) mm
- HCHD - 05 SHOVEL STANDARD BLADE 247(W) x 315(D) x 1103(L) mm
- HCHD - 06 SHOVEL STANDARD BLADE 247(W) x 315(D) x 1360(L) mm
- HCHD - 09 SHOVEL LARGE BLADE 334(W) x 410(D) x 1035(L) mm
- HCHD - 10 SHOVEL LARGE BLADE 334(W) x 410(D) x 1159(L) mm
- HCHD - 16 SHOVEL LARGE BLADE 334(W) x 410(D) x 1410(L) mm
- HCHD - 24 SHOVEL DEEP PAN SMALL BLADE 257(W) x 350(D) x 1045(L) mm
- HCHD - 25 SHOVEL DEEP PAN SMALL BLADE 257(W) x 350(D) x 1169(L) mm
- HCHD - 26 SHOVEL DEEP PAN SMALL BLADE 257(W) x 350(D) x 1420(L) mm



PP = Polypropylene

Prices listed are subject to change without notice and are exclusive of  
freight and GST. Terms and Conditions of Sale available upon request.

**NAYLA**  
PTY LIMITED

TEL: +61 (0)2 9678 9200  
FAX: +61 (0)2 9678 9755  
Email: [nayla@nayla.com](mailto:nayla@nayla.com)  
Web: [www.nayla.com](http://www.nayla.com)